

Robert Schumann
Symphony No. 3 in Eb Major, Op. 97

I-III tacet

Bass-Posaune

Feierlich IV

Solo

nach und nach stärker

Die Halben wie vorher die Viertel

Lebhaft V

46 A 25 B 26 C 32 D 8 E

167 G 40 H 23 I 19 K

Trüben

Schneller

peresc.

Trombone III.

III. Aufzug.

I. SCENE.

Vivace.

1 2 [3

piu f

5 *ff* *ff*

2 *ff*

6 *ff*

7 8 9 10 Cello. *ff*

11 *ff*

12 *f* *piu f* *f* *piu f*

Giuseppe Rossini
William Tell Overture

Bassposanne.

Andante. (♩ 54)

Allegro. (♩ 108)

23 A 24

30 B 8

Viol.

88

98

108

118

128

138

148

158

166

ppp
Fag. II.

Andante. (♩ 54)

Ottorino Respighi Fountains of Rome

TROMBONE 3^o

La fontana di Valle Giulia all'alba.

Poco più mosso Tempo 1^o

Andante mosso

13 1 13 2 2 13 3 10

Detailed description: This is the first staff of music for the Trombone 3 part. It begins with the tempo marking 'Andante mosso' and a 3/4 time signature. The key signature has one flat (B-flat). The staff contains several measures of music, with measure numbers 13, 1, 13, 2, 2, 13, 3, and 10 written above the notes. The notes are mostly quarter and eighth notes.

La fontana del Tritone al mattino.

Vivo

3 3 4 4 2 6

(Tromboni)

Detailed description: This is the first staff of music for the Trombone 3 part of 'La fontana del Tritone al mattino'. It starts with the tempo marking 'Vivo' and a 3/4 time signature. The key signature has one flat. Measure numbers 3, 3, 4, 4, 2, and 6 are written above the staff. The music features a mix of quarter and eighth notes.

Un poco mosso

(Allegretto)

Più vivo

(gritamento)

Più vivo ancora

(Tromboni)

10 5 15 6 17 7 16 8 16

Detailed description: This is the second staff of music for the Trombone 3 part of 'La fontana del Tritone al mattino'. It continues with the tempo markings 'Un poco mosso (Allegretto)', 'Più vivo (gritamento)', and 'Più vivo ancora (Tromboni)'. The time signature remains 3/4. Measure numbers 10, 5, 15, 6, 17, 7, 16, 8, and 16 are written above the staff. The music includes some dynamic markings like 'pp' and 'cres.'.

La fontana di Trevi al meriggio.

All^o moderato

9 15 10 2

un poco rall. *pp* *cres.* *f*

Detailed description: This is the first staff of music for the Trombone 3 part of 'La fontana di Trevi al meriggio'. It starts with the tempo marking 'All^o moderato' and a 3/4 time signature. The key signature has one flat. Measure numbers 9, 15, 10, and 2 are written above the staff. The music features a mix of quarter and eighth notes, with dynamic markings 'un poco rall.', 'pp', 'cres.', and 'f'.

1 11 All^o vivace

Foros. *fff*

Detailed description: This is the second staff of music for the Trombone 3 part of 'La fontana di Trevi al meriggio'. It continues with the tempo marking 'All^o vivace'. The time signature remains 3/4. Measure numbers 1 and 11 are written above the staff. The music includes dynamic markings 'Foros.' and 'fff'.

fff

Detailed description: This is the third staff of music for the Trombone 3 part of 'La fontana di Trevi al meriggio'. It continues with the tempo marking 'All^o vivace'. The time signature remains 3/4. The staff begins with the dynamic marking 'fff'.

12

Detailed description: This is the fourth staff of music for the Trombone 3 part of 'La fontana di Trevi al meriggio'. It continues with the tempo marking 'All^o vivace'. The time signature remains 3/4. Measure number 12 is written above the staff.

Detailed description: This is the fifth staff of music for the Trombone 3 part of 'La fontana di Trevi al meriggio'. It continues with the tempo marking 'All^o vivace'. The time signature remains 3/4.

Detailed description: This is the sixth and final staff of music for the Trombone 3 part of 'La fontana di Trevi al meriggio'. It continues with the tempo marking 'All^o vivace'. The time signature remains 3/4.

TROMBONE 3^o

13

14 Più vivace
(In 4/2)

ff (Ritmo di 3 battute) ff

1 2

1

piu f

2

15

fff

(Ritmo di 4 battute)

Largamente

fff

4

16

dim. mf dim.

6

17 Calmo

16

p tacet al fine

La fontana di Villa Medici al tramonto.

And^{te} come prima

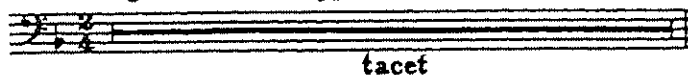
18 Andante 12 19 Meno mosso 16 20 11 21 10

3 22 16 23 10

Ludwig van Beethoven
Symphony No. 9 in D Minor, Op. 125

Baß-Posaune

Allegro ma non troppo, un poco maestoso



Molto vivace $\text{♩} = 116$

Archi *f* Archi *f* 1 Timp. Orch. 2 189 3 5 3

G.P. G.P. G.P. G.P. G.P. G.P. G.P.

159 17 19 E 189 3 1. 9 3 2. 7 8

G.P. G.P.

404 *stringendo il tempo* *Presto* $\text{♩} = 118$

Orch. *f*

414 6 1. 2 2. 15 L 32 Ob.

f > *p*

473 M *cresc.*

481 *f*

489 1. 2. *fp* *cresc.*

490 *f* *dim.* *p* *cresc.*

510 1 *cresc.* *f* *dim.*

528 1 1 1 poco ritard. Molto vivace 8 189 3 5 3

sempre più p *pp* G.P. G.P.