

# SINFONIA

Andante *f* G. Cassa



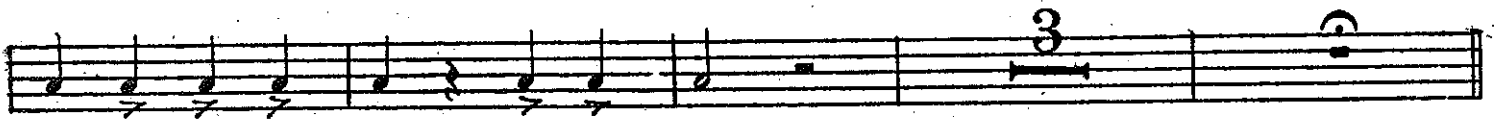
11 *f* Allegro



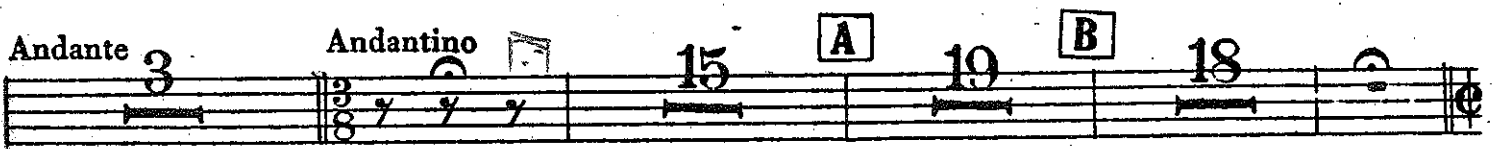
1 *f*



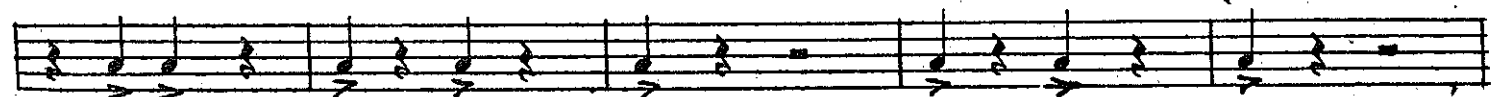
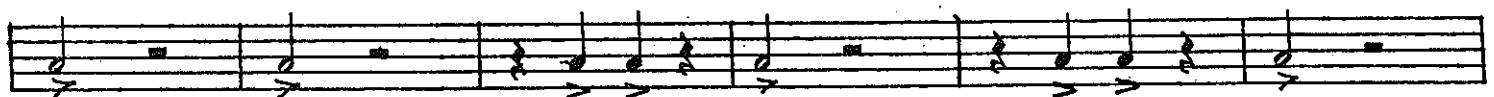
3



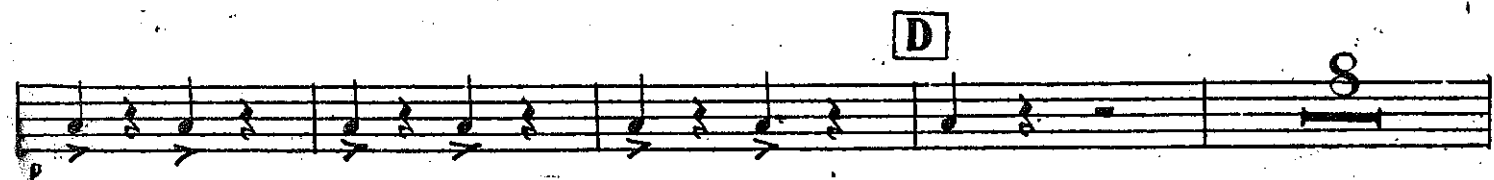
Andante 3 Andantino 15 A 19 B 18



Allegro 27 (Tamb.) C *f*

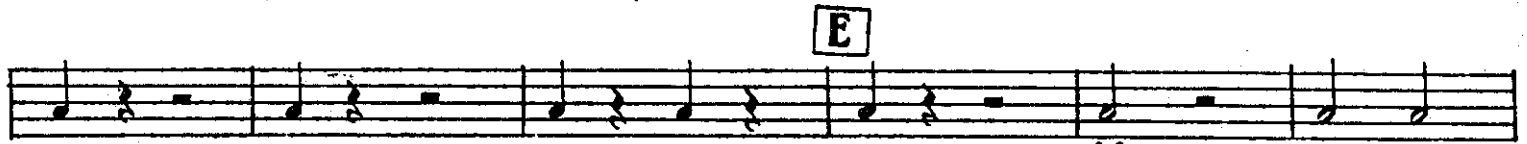
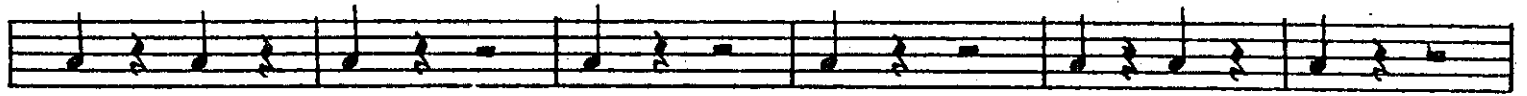


D 8





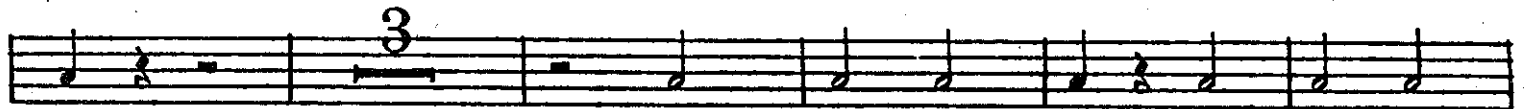
*pp*



*ff*



*ff*



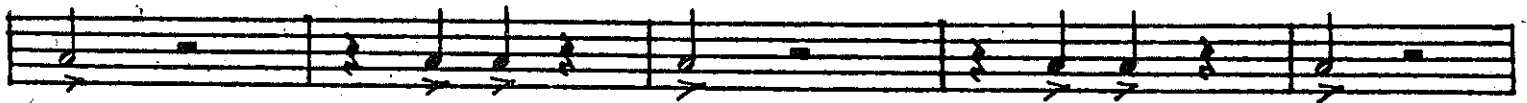
*f*

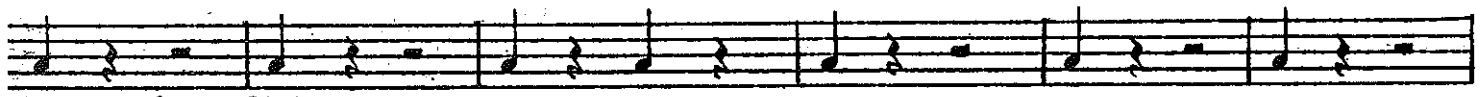


*ff*



*ff*

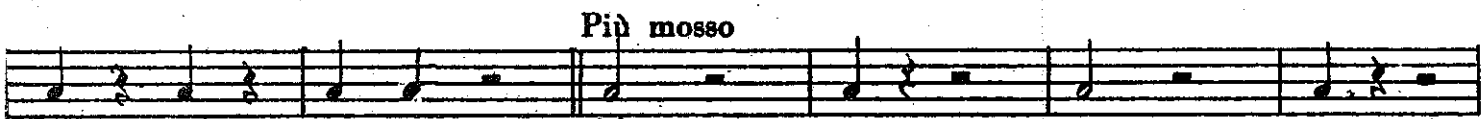




*p* *cresc.*

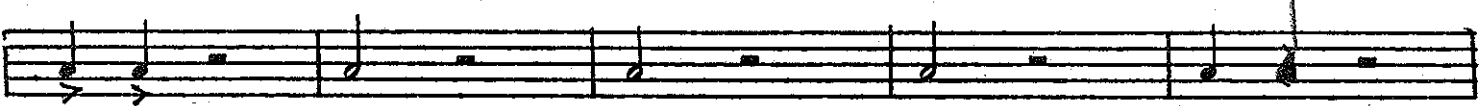


*cresc.*



*Più mosso*

*ff*



*p*



*ff*



*Vuota*

*Vuota*

*p*

# ATTO I.

## CORO D'INTRODUZIONE

Allegro mosso G. Cassa

*f*

*f* *ff* *f*

*f*

*ff*

Un poco meno mosso

(Arpa) *ff*

*p* *ff*

*p*